

Are children with prolonged fever at a higher risk for serious illness? A prospective observational study

Ruud G Nijman ^{1,2,3} Chantal D Tan ⁴ Nienke N Hagedoorn ⁴ Daan Nieboer,⁵ Jethro Adam Herberg ² Anda Balode,⁶ Ulrich von Both ^{7,8} Enitan D Carrol,^{9,10} Irini Eleftheriou,¹¹ Marieke Emonts,^{12,13,14} Michiel van der Flier,^{15,16,17} Ronald de Groot,^{16,17} Benno Kohlmaier ¹⁸ Emma Lim,^{12,19} Federico Martín-Torres ²⁰ Marko Pokorn,²¹ Franc Strle,²¹ Maria Tsolia,¹¹ Shunmay Yeung,²² Joany M Zachariasse ⁴ Dace Zavadska,⁶ Werner Zenz,¹⁸ Michael Levin,² Clementien L Vermont,²³ Henriette A Moll ⁴ Ian K Maconochie,¹ On behalf of PERFORM consortium

► Additional supplemental material is published online only. To view, please visit the journal online (<http://dx.doi.org/10.1136/archdischild-2023-325343>).

For numbered affiliations see end of article.

Correspondence to

Dr Ruud G Nijman, Department of Paediatric Emergency Medicine, Imperial College Healthcare NHS Trust, London W2 1NY, UK; r.nijman@imperial.ac.uk

Received 15 January 2023
Accepted 10 April 2023
Published Online First
25 April 2023



© Author(s) (or their employer(s)) 2023. No commercial re-use. See rights and permissions. Published by BMJ.

To cite: Nijman RG, Tan CD, Hagedoorn NN, *et al.* *Arch Dis Child* 2023;**108**:632–639.

ABSTRACT

Objectives To describe the characteristics and clinical outcomes of children with fever ≥ 5 days presenting to emergency departments (EDs).

Design Prospective observational study.

Setting 12 European EDs.

Patients Consecutive febrile children < 18 years between January 2017 and April 2018.

Interventions Children with fever ≥ 5 days and their risks for serious bacterial infection (SBI) were compared with children with fever < 5 days, including diagnostic accuracy of non-specific symptoms, warning signs and C-reactive protein (CRP; mg/L).

Main outcome measures SBI and other non-infectious serious illness.

Results 3778/35 705 (10.6%) of febrile children had fever ≥ 5 days. Incidence of SBI in children with fever ≥ 5 days was higher than in those with fever < 5 days (8.4% vs 5.7%). Triage urgency, life-saving interventions and intensive care admissions were similar for fever ≥ 5 days and < 5 days. Several warning signs had good rule in value for SBI with specificities > 0.90 , but were observed infrequently (range: 0.4%–17%). Absence of warning signs was not sufficiently reliable to rule out SBI (sensitivity 0.92 (95% CI 0.87–0.95), negative likelihood ratio (LR) 0.34 (0.22–0.54)). CRP < 20 mg/L was useful for ruling out SBI (negative LR 0.16 (0.11–0.24)). There were 66 cases (1.7%) of non-infectious serious illnesses, including 21 cases of Kawasaki disease (0.6%), 28 inflammatory conditions (0.7%) and 4 malignancies.

Conclusion Children with prolonged fever have a higher risk of SBI, warranting a careful clinical assessment and diagnostic workup. Warning signs of SBI occurred infrequently but, if present, increased the likelihood of SBI. Although rare, clinicians should consider important non-infectious causes of prolonged fever.

INTRODUCTION

Guidelines identify prolonged fever, often defined as a duration of fever of 5 days or more, as a risk factor for serious bacterial infections (SBI) in children.¹ Moreover, a prolonged duration of fever could suggest non-infectious causes, such as inflammatory

WHAT IS ALREADY KNOWN ON THIS TOPIC

- ⇒ A prolonged fever of five days or more is considered a warning sign for serious infection in childhood fever management guidelines.
- ⇒ Prolonged fever is believed to be associated with serious bacterial infections (SBI) and with non-infectious and inflammatory conditions such as Kawasaki disease.

WHAT THIS STUDY ADDS

- ⇒ In this multicentre prospective observational study, 10.6% of 35 705 febrile children had a fever ≥ 5 days, with higher risk of SBI (8.4% vs 5.7%).
- ⇒ Warning signs of SBI occurred infrequently but, if present, increased the likelihood of SBI in children with prolonged fever.
- ⇒ Kawasaki disease (0.6%) and other inflammatory conditions were uncommon (1.7%).

HOW THIS STUDY MIGHT AFFECT RESEARCH, PRACTICE OR POLICY

- ⇒ Children with prolonged fever have a higher risk of SBI, warranting a careful clinical assessment and considerate diagnostic work, also with attention for rare but important non-infectious causes.

conditions^{2–4} and malignancies.^{5 6} Hence, a careful diagnostic approach is recommended when these children and young people present to urgent and emergency care facilities. Yet, data scoping how many children present with prolonged fevers or looked at their presenting characteristics and clinical outcomes are scarce. Moreover, little is known about the practice variation of these children in Europe that could inform updated practice strategies to reduce unnecessary diagnostic testing and antimicrobial prescribing. In this prospective, multinational cohort study, we aimed to determine the frequency of children with fever ≥ 5 days presenting to emergency departments (EDs) across

Europe, and to compare these children with those with a shorter duration of fever. Additionally, we sought to describe the characteristics of children with non-infectious causes of their febrile illness.

METHODS

Design, setting and participants

This is a secondary analysis of data collected as part of a prospective, multinational cohort study called the Management and Outcome of Fever in Children in Europe study.⁷ This study was an observational study embedded in the Personalised Risk Assessment in Febrile Illness to Optimise Real-life Management across the European Union study. Routine clinical data of consecutive febrile children aged 0–18 years were collected between January 2017 and April 2018. Fever was defined as a temperature measure of $\geq 38.0^{\circ}\text{C}$ at triage, or a history of fever at home in the preceding 72 hours. At each of the 12 participating institutions, data collection varied from 1 week/month to the whole month, as reported previously. These institutions represented eight European countries (Austria, Germany, Greece, Latvia, the Netherlands (3), Spain, Slovenia and the UK (3)), of which nine were tertiary university hospitals and three teaching hospitals, and with nine having dedicated paediatric EDs and three being mixed adults and paediatric EDs.⁸ Data were extracted from clinical notes and the deidentified data were then entered into a prespecified digital data entry form using the REDCap online platform by trained members of the research teams.⁹

Definitions of variables of interest

A previous visit included visits to a healthcare provider during this disease episode within 7 days prior to ED visit. Comorbidity was defined as a chronic underlying condition that is expected to last at least 1 year.¹⁰ Triage urgency was categorised into three levels (ie, emergent–very urgent, urgent, standard–non-urgent), transformed from the five-level Manchester Triage System or locally adapted triage systems.¹¹ Warning signs of fever were defined as per the National Institute for Health and Care Excellence guidelines for the management of children with fever.¹ We combined chest wall retractions, nasal flaring, grunting and apnoea to define increased work of breathing. Neurological symptoms included meningeal signs (ie, Kernig, Brudzinski, tripod phenomenon, neck stiffness, bulging fontanelle for <1 year) and focal neurological signs. Tachycardia and tachypnoea were defined according to the age-adjusted advanced paediatric life support threshold values for respiratory rate and heart rate.^{1 12} Decreased level of consciousness was defined as any other than A(lert), meaning any of V(entral), P(ain) or U(nresponsive), on the AVPU scale. We analysed non-specific respiratory signs and symptoms defined as coughing, runny nose, sore throat, sneezing; non-specific gastrointestinal symptoms defined as vomiting or diarrhoea; and non-specific rash as any rash or viral exanthema other than a non-blanching rash. Immediate life-saving interventions (ILSI) in the ED were defined as airway and breathing support, emergency procedures, haemodynamic support or emergency medication.¹³ Acuity of presentations was determined by (1) triage urgency, (2) need for ILSI or (3) intensive care admission.

Outcome measures

The primary outcome was SBI, defined as patients with ‘definite bacterial’ or ‘probable bacterial’ with focus of infection from the gastrointestinal tract, lower respiratory tract, urinary tract, bone and joints, central nervous system or sepsis. Next, we

evaluated the characteristics of children with a non-infectious cause for their fever. The outcomes were allocated following a classification flow chart (online supplemental file 2), based on presenting signs and symptoms, inflammatory markers, virology, microbiology and imaging, by independent trained members of the research staff.^{7 14} When needed, consensus diagnoses were obtained by an expert panel. Invasive bacterial infections were those with a positive bacterial pathogen isolated in blood or cerebral spinal fluid.

Data analyses

First, comparative analyses between children with ≥ 5 days vs < 5 days of fever were performed. Variables were expressed in absolute numbers and relative frequencies, or medians with the IQR where appropriate. χ^2 analyses were used for categorical and dichotomous variables, and Fisher’s exact test was used when ≤ 5 cases present; non-parametric Wilcoxon rank-sum test was used for non-parametrically distributed continuous variables. Second, children with a prolonged fever with and without SBI were compared and, third, diagnostic accuracy (ie, sensitivity, specificity, positive predictive value, negative predictive value, diagnostic OR (dOR) and positive and negative likelihood ratios (LR)) was calculated for the presence of SBI for (1) non-specific signs and symptoms, (2) duration of fever at cut-offs of ≥ 7 and ≥ 10 days, (3) warning signs of fever and (4) C-reactive protein (CRP) at various cut-offs.

RESULTS

Comparing children with prolonged fever with those with a shorter duration of fever

A total of 3778/35 705 (10.6%) febrile children had fever ≥ 5 days, with differing seasonal patterns for each site (online supplemental file 3). These children were older than those with a shorter duration of fever (3.0 years (IQR 1.5–6.0 years) vs 2.7 years (IQR 1.3–5.4 years), $p < 0.001$). They had more prior visits to healthcare providers within the same disease episode (1929 (55%) vs 7062 (23%), $p < 0.001$) and were more frequently referred for ED assessment (1759 (48%) vs 13 225 (43%), $p < 0.001$) (table 1). Children with fever ≥ 5 days were prescribed antibiotics prior to attending ED more frequently ($n = 1014$ (27%) vs $n = 2879$ (9%), $p < 0.001$).

Children with fever ≥ 5 days had more non-specific respiratory symptoms (1560 (50%) vs 9927 (37%), $p < 0.001$), and presented with tachycardia less frequently (993 (33%) vs 10 524 (42%), $p < 0.001$). Children with fever ≥ 5 days had similar levels of acuity as by ‘emergent’ or ‘very urgent’ triage urgency (< 5 days: $n = 3190$ (10%), ≥ 5 days: $n = 241$ (6%), $p < 0.001$), ILSI (< 5 days: $n = 513$ (2%), ≥ 5 days: $n = 50$ (1%), NS) and intensive care admission (< 5 days: $n = 125$ (0.4%), ≥ 5 days: $n = 18$ (0.5%), NS). Children with fever ≥ 5 days had more laboratory testing (dOR 2.08 (95% CI 1.93–2.25)) and imaging (dOR 1.69 (95% CI 1.58–1.81)). They were prescribed more antibiotics as part of this ED presentation (dOR 1.59 (95% CI 1.49–1.71)), with antibiotic prescribing in children with fever ≥ 5 days ranging from 27% to 63% between study sites.

Incidence of SBI was significantly higher in those with fever ≥ 5 days ($n = 319$, 8.4%) than in those with shorter duration of fever ($n = 1812$, 5.7%) (dOR 1.53 (95% CI 1.35–1.74), $p < 0.001$). Children with fever ≥ 5 days and SBI had a focus of lower respiratory tract infections more often ($n = 172$ (54%) vs $n = 628$ (35%)); urinary tract infections were seen commonly (≥ 5 days: $n = 111$ (35%) vs < 5 days:

Table 1 Characteristics of children with prolonged fever and their outcomes compared with children with shorter duration of fever

		All children with fever <5 days n=31 927 (89.4%)*	All children with fever ≥5 days n=3778 (10.6%)*	P value
General characteristics				
Age	Median (IQR)	2.7 (1.3–5.5)	3.0 (1.5–6.0)	<0.001
Sex	Female, n (%)	14 416 (45)	1720 (46)	0.68
Previous visit to any healthcare provider in the last 7 days	n (%)	7062 (23)	1929 (55)	<0.001
Referral	n (%)	13 225 (43)	1759 (48)	<0.001
Comorbidity	n (%)	5240 (17)	583 (16)	0.13
Triage urgency classification	Emergent–very urgent	3190 (10%)	241 (6%)	<0.001
	Urgent	7931 (25%)	903 (24%)	
	Standard–non-urgent	19 960 (63%)	2527 (67%)	
Duration of fever	Days, median (IQR)	3 (3–4)	6 (5–7)	<0.001
Non-specific signs and symptoms				
Respiratory signs and symptoms	Any	9927 (37%)	1560 (50%)	<0.001
Gastrointestinal signs and symptoms	Any	9677 (34%)	1133 (34%)	0.61
Other type of rash†	Any	2806 (10%)	479 (14%)	<0.001
Warning signs and symptoms				
Ill appearance	n (%)	5101 (17)	599 (17)	0.97
Tachypnoea (breaths/min)	APLS thresholds, n (%)	6139 (33)	644 (32)	0.19
Tachycardia (beats/min)	APLS thresholds, n (%)	10 524 (42)	993 (33)	<0.001
Prolonged capillary refill	≥3 s, n (%)	354 (1)	53 (2)	0.07
Oxygen saturations (%O ₂)	<94%O ₂ , n (%)	636 (3)	126 (4)	<0.001
Level of consciousness	Decreased (verbal, pain, unresponsive), n (%)	166 (1)	14 (0.4)	0.27
Increased work of breathing	n (%)	4768 (17)	481 (15)	0.005
Non-blanching rash	n (%)	926 (3)	90 (3)	0.09
Neurological signs	n (%)	210 (1)	24 (1)	1.00
Seizures	n (%)	1261 (4)	42 (1)	<0.001
Diagnostics				
C-reactive protein	mg/L, median (IQR)	17 (5–48)	23 (6–64)	<0.001
Laboratory testing at ED	Any, n (%)	14 412 (45)	2200 (58)	<0.001
Imaging at ED	Any, n (%)	5375 (17)	1121 (30)	<0.001
Treatment and outcomes				
Immediate life-saving interventions‡	Any, n (%)	513 (2)	50 (1)	0.21
Antibiotics prescribed this attendance	Any, n (%)	9857 (31)	1560 (42)	<0.001
Diagnosis—focus of infection	Upper respiratory tract	17 157 (54%)	1861 (49%)	<0.001
	Lower respiratory tract	4295 (13%)	838 (22%)	
	Gastrointestinal	3417 (11%)	191 (5%)	
	Urinary tract	1104 (3%)	152 (4%)	
	Childhood exanthema	1511 (5%)	221 (6%)	
	Soft tissue or musculoskeletal	748 (2%)	92 (2%)	
	Sepsis or meningitis	236 (1%)	22 (1%)	
	Undifferentiated fever	2559 (8%)	247 (7%)	
	Inflammatory, other	877 (3%)	151 (4%)	
	Diagnosis	Serious bacterial infection	1812 (5.7%)	319 (8.4%)
Invasive bacterial infection		129 (0.4%)	15 (0.4%)	1.00
Disposition	Discharge without follow-up	11 393 (36%)	1307 (35%)	0.04
	Discharge with follow-up	12 288 (38%)	1410 (37%)	
	Admission <24 hours	1546 (5%)	189 (5%)	
	Admission 24 hours or more	5974 (19%)	787 (21%)	
	Admission, duration unknown	370 (1%)	45 (1%)	
	PICU or death§	125 (0.4%)	18 (0.5%)	
	Left without being seen	190 (1%)	15 (0%)	

*The MOFICHE study included a total of 38 480 febrile children⁷; n=2775 (7%) were excluded because of missing data on duration of fever.

†This excludes any non-blanching rash including petechiae and purpura.

‡Immediate life-saving interventions (ILSI): airway and breathing support (non-rebreathing mask, (non-invasive) ventilation, intubation), emergency procedures (chest needle decompression, pericardiocentesis or open thoracotomy), haemodynamic support (fluid bolus (>10 mL/kg) or blood administration) or emergency medication (naloxone, dextrose, atropine, adenosine, epinephrine or vasopressors).

§In total, 1 death was recorded in the MOFICHE study, which had a duration of fever <5 days.

APLS, advanced paediatric life support; ED, emergency department; MOFICHE, Management and Outcome of Fever in Children in Europe; PICU, paediatric intensive care unit.

Table 2 Characteristics of children with fever for 5 days or more with and without serious bacterial infection

		Non-SBI n=3459 (91.6%)	SBI n=319 (8.4%)	P value
General characteristics				
Age	Median (IQR)	3.1 (1.6–6.1)	2.4 (1.3–5.6)	0.004
Sex	Female, n (%)	1545 (45)	175 (55)	<0.001
Previous visit to any healthcare provider in the last 7 days	n (%)	1742 (54)	187 (60)	0.046
Referral	n (%)	1557 (46)	202 (65)	<0.001
Comorbidity	n (%)	527 (15)	56 (18)	0.34
Triage urgency classification	Emergent–very urgent	217 (6%)	24 (8%)	0.12
	Urgent	820 (24%)	83 (26%)	
	Standard–non-urgent	2340 (68%)	187 (59%)	
Duration of fever	Days, median (IQR)	6 (5–7)	6 (5–8)	<0.001
Non-specific signs and symptoms				
Respiratory signs and symptoms	Any	1458 (51%)	102 (38%)	<0.001
Gastrointestinal signs and symptoms	Any	1024 (34%)	109 (38%)	0.18
Other type of rash*	Any	455 (15%)	24 (8%)	0.003
Warning signs and symptoms				
Ill appearance	n (%)	502 (17)	97 (31)	<0.001
Tachypnoea (breaths/min)	APLS thresholds, n (%)	590 (31)	54 (41)	0.03
Tachycardia (beats/min)	APLS thresholds, n (%)	881 (32)	112 (43)	<0.001
Prolonged capillary refill	≥3 s, n (%)	43 (1)	10 (4)	0.006
Oxygen saturations (%O ₂)	<94%O ₂ , n (%)	111 (4)	15 (6)	0.20
Level of consciousness	Decreased (verbal, pain, unresponsive), n (%)	10 (0)	4 (1)	0.03
Increased work of breathing	n (%)	410 (14)	71 (27)	<0.001
Non-blanching rash	n (%)	84 (3)	6 (2)	0.61
Neurological signs	n (%)	21 (1)	3 (1)	0.64
Seizures	n (%)	33 (1)	9 (3)	0.003
Diagnostics				
C-reactive protein	mg/L, median (IQR)	18 (5–46)	111 (71–174)	<0.001
Laboratory testing at ED	Any, n (%)	1946 (56)	254 (80)	<0.001
Imaging at ED	Any, n (%)	900 (26)	221 (69)	<0.001
Treatment and outcomes				
Immediate life-saving interventions	Any, n (%)	42 (1)	8 (3)	0.09
Antibiotics prescribed this attendance	Any, n (%)	1268 (37)	292 (92)	<0.001
Diagnosis—focus of infection	Upper respiratory tract	1861 (54%)	0 (0%)	<0.001
	Lower respiratory tract	665 (19%)	173 (54%)	
	Gastrointestinal	172 (5%)	19 (6%)	
	Urinary tract	41 (1%)	111 (35%)	
	Childhood exanthema	221 (6%)	0 (0%)	
	Soft tissue or musculoskeletal	88 (3%)	4 (1%)	
	Sepsis or meningitis	10 (0%)	12 (4%)	
	Undifferentiated fever	247 (7%)	0 (0%)	
	Inflammatory or other	151 (1%)	0 (0%)	
	Disposition	Discharge without follow-up	1288 (37%)	19 (6%)
Discharge with follow-up		1302 (38%)	108 (34%)	
Admission <24 hours		176 (5%)	13 (4%)	
Admission 24 hours or more		614 (18%)	173 (54%)	
Admission, duration unknown		41 (1%)	4 (1%)	
PICU		16 (0%)	2 (1%)	
Left without being seen		15 (0%)	0 (0%)	

*This excludes any non-blanching rash including petechiae and purpura.

APLS, advanced paediatric life support; ED, emergency department; PICU, paediatric intensive care unit; SBI, serious bacterial infection.

n=769 (42%)) (online supplemental file 4). Invasive bacterial infections were rare in both fever duration groups (≥5 days: n=15 (0.4%) vs <5 days: n=129 (0.4%), NS). Rates of SBI were similar between those with a measured fever ≥38.0°C at triage (n=1161 (33%), 9%) and those without (n=2335 (67%), 8%, NS).

Characteristics of children with fever ≥5 days with and without SBI

Children with fever ≥5 days and SBI were younger than those without SBI (2.4 years (IQR 1.3–5.6 years) vs 3.1 years (IQR 1.6–6.1 years), p<0.01) and were more often female (175 (55%) vs 1545 (45%), p<0.001) (table 2). Warning signs such as ill

Table 3 Diagnostic accuracy of clinical signs and symptoms and C-reactive protein and their risk of having serious bacterial infection in children with fever of 5 days or more

	Sensitivity	Specificity	PPV	NPV	dOR
Clinical warning signs					
Tachypnoea	0.41 (0.32–0.50)	0.69 (0.67–0.71)	0.08 (0.06–0.11)	0.94 (0.93–0.95)	1.52 (1.06–2.18)
Tachycardia	0.43 (0.37–0.50)	0.68 (0.67–0.70)	0.11 (0.09–0.13)	0.93 (0.92–0.94)	1.64 (1.27–2.13)
Ill appearance	0.31 (0.26–0.37)	0.85 (0.84–0.86)	0.16 (0.13–0.19)	0.93 (0.92–0.94)	2.57 (1.98–3.33)
Increased work of breathing	0.17 (0.13–0.22)	0.91 (0.90–0.92)	0.15 (0.11–0.20)	0.92 (0.91–0.93)	2.18 (1.54–3.08)
Prolonged capillary refill	0.04 (0.02–0.07)	0.99 (0.98–0.99)	0.19 (0.09–0.32)	0.92 (0.91–0.93)	2.79 (1.38–5.62)
Oxygen saturations <94%	0.06 (0.03–0.09)	0.96 (0.95–0.97)	0.12 (0.07–0.19)	0.92 (0.91–0.93)	1.50 (0.86–2.62)
Non-blanching rash	0.02 (0.01–0.04)	0.97 (0.97–0.98)	0.07 (0.02–0.14)	0.91 (0.90–0.92)	0.74 (0.32–1.71)
Seizure	0.03 (0.01–0.06)	0.99 (0.99–0.99)	0.21 (0.10–0.37)	0.92 (0.91–0.93)	3.24 (1.54–6.84)
Neurological signs	0.01 (0.00–0.03)	0.99 (0.99–1.00)	0.13 (0.03–0.32)	0.92 (0.91–0.93)	1.68 (0.50–5.66)
Any warning sign	0.92 (0.87–0.95)	0.24 (0.22–0.26)	0.11 (0.09–0.12)	0.97 (0.95–0.98)	3.52 (2.12–5.84)
Duration of fever (days)					
7	0.47 (0.42–0.53)	0.62 (0.60–0.63)	0.10 (0.09–0.12)	0.93 (0.92–0.94)	1.45 (1.16–1.83)
10	0.21 (0.17–0.26)	0.85 (0.84–0.86)	0.12 (0.09–0.15)	0.92 (0.91–0.93)	1.54 (1.16–2.05)
Non-specific signs and symptoms					
Other type of rash*	0.08 (0.05–0.12)	0.85 (0.84–0.86)	0.05 (0.03–0.07)	0.91 (0.90–0.92)	0.51 (0.33–0.79)
Gastrointestinal symptoms	0.38 (0.33–0.44)	0.66 (0.64–0.68)	0.10 (0.08–0.11)	0.92 (0.91–0.93)	1.20 (0.93–1.54)
Respiratory symptoms	0.38 (0.32–0.44)	0.49 (0.47–0.51)	0.07 (0.05–0.08)	0.90 (0.88–0.91)	0.60 (0.46–0.77)
Biomarkers					
C-reactive protein ≥10 mg/L	0.94 (0.90–0.96)	0.36 (0.34–0.39)	0.16 (0.14–0.18)	0.98 (0.96–0.99)	8.40 (5.02–14.06)
C-reactive protein ≥20 mg/L	0.92 (0.87–0.95)	0.52 (0.50–0.54)	0.20 (0.18–0.23)	0.98 (0.97–0.99)	11.84 (7.50–18.67)
C-reactive protein ≥60 mg/L	0.82 (0.76–0.86)	0.81 (0.79–0.82)	0.36 (0.32–0.40)	0.97 (0.96–0.98)	18.42 (13.12–25.87)
C-reactive protein ≥80 mg/L	0.66 (0.60–0.72)	0.86 (0.85–0.88)	0.39 (0.34–0.44)	0.95 (0.94–0.96)	12.20 (9.11–16.35)

*This excludes any non-blanching rash including petechiae and purpura.
dOR, diagnostic OR; NPV, negative predictive value; PPV, positive predictive value.

appearance, tachypnoea, tachycardia and increased work of breathing occurred more frequently in those with SBI than in those without; prolonged central capillary refill, abnormal level of consciousness and seizures, although present more frequently in those with SBI, were seen in few children. CRP was higher in children with SBI (111 mg/L (IQR 71–174 mg/L) vs 18 mg/L (IQR 5–46 mg/L), $p < 0.001$). Antibiotic prescribing (292 (92%) vs 1268 (37%), $p < 0.001$) and hospital admission >24 hours

(173 (54%) vs 614 (18%), $p < 0.001$) were higher in children with SBI.

Several warning signs, such as prolonged capillary refill, increased work of breathing, non-blanching rash, seizures and neurological signs, had specificities >0.90 (table 3). Presence of a non-specific rash (dOR 0.51 (95% CI 0.33–0.79)) and non-specific respiratory symptoms (dOR 0.60 (95% CI 0.46–0.77)) was associated with the absence of SBI. Having fevers for ≥7 or

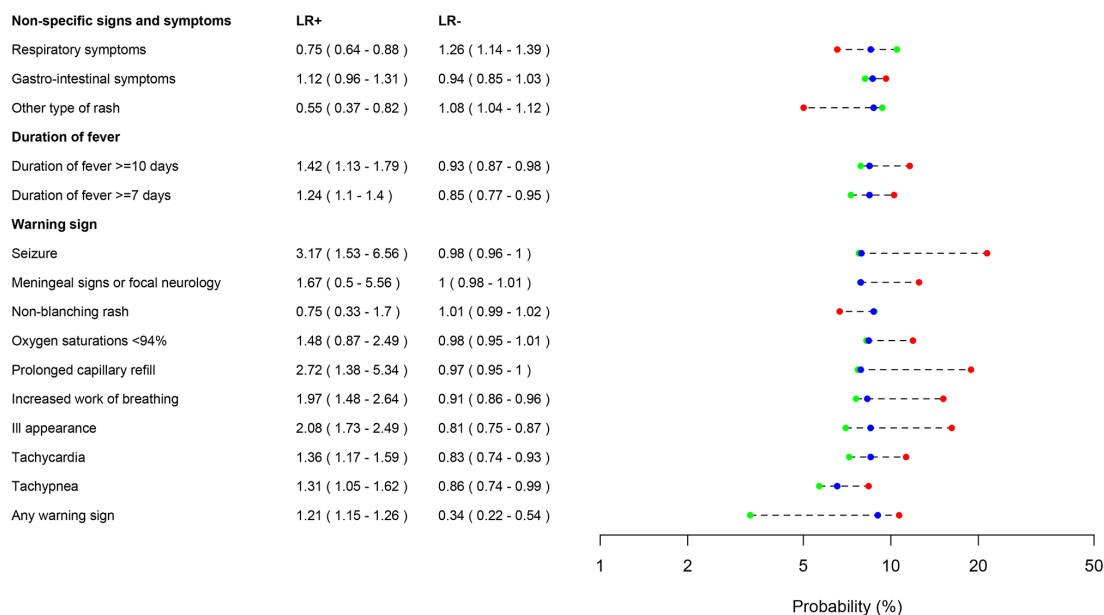


Figure 1 Likelihood ratio (LR) and dumbbell plots of the probabilities of having serious bacterial infection (SBI) for clinical warning signs. The change from pretest probabilities (blue dots) to post-test probabilities using negative LRs (green dots; rule out value) and positive LRs (red dots; rule in value) for non-specific signs and symptoms, duration of fever and clinical warning signs. Please note the incidence of SBI varies based on number of available data for each of the predictor variables. The x-axis is depicted on a logarithmic scale.

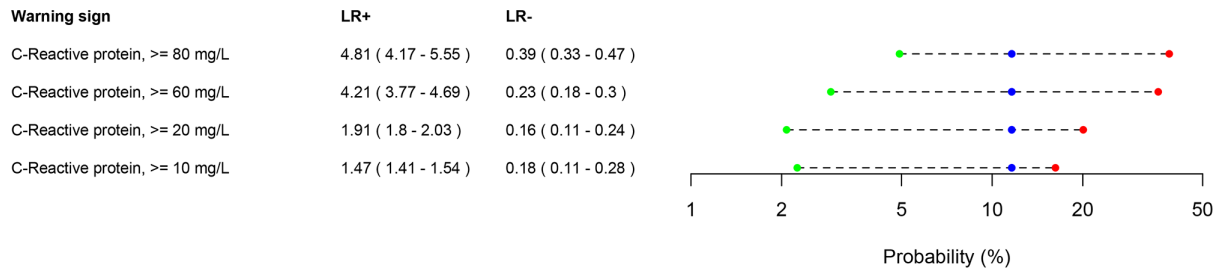


Figure 2 Likelihood ratio (LR) and dumbbell plots of the probabilities of having serious bacterial infection (SBI) for different cut-offs of C-reactive protein (CRP; mg/L). The change from pretest probabilities (blue dots) to post-test probabilities using negative LR (green dots; rule out value) and positive LR (red dots; rule in value) for different cut-offs of CRP (mg/L). Please note the incidence of SBI in those with CRP performed (11.6% in n=2152 children) was higher than in the overall cohort of children with fever ≥ 5 days. The x-axis is depicted on a logarithmic scale.

≥ 10 days did not change the probabilities of SBI (figure 1). Several clinical warning signs changed pretest probabilities considerably, with the limitation of broad CIs due to their sparse occurrence. Absence of warning signs (sensitivity 0.92 (95% CI 0.87–0.95), negative LR 0.34 (95% CI 0.22–0.54)) did not alter post-test probabilities sufficiently to reliably rule out SBI. Positive and negative LR of clinical warning signs in children with fever < 5 days were similar to those in children with fever ≥ 5 days (online supplemental file 5). CRP < 20 mg/L was a good marker for ruling out SBI (negative LR 0.16 (0.11–0.24)) (figure 2). One child with CRP < 20 mg/L and no warning signs (out of 2448 with data available (online supplemental file 6)) had an SBI.

Diagnostic management of children with fever ≥ 5 days

The diagnostic management for children with fever ≥ 5 days varied between EDs, with inflammatory markers in blood (white cell count 56%, CRP 57%), urinalysis (27%), chest X-ray (26%) and respiratory tests (21%) done most frequently; many children (26%) did not undergo additional diagnostic tests (table 4).

Other serious illness in children with fever ≥ 5 days

There were 66 children (1.7%) with other serious conditions (online supplemental file 7), including 21 cases (0.6%) of Kawasaki disease and 28 cases (0.7%) of inflammatory conditions. Children with Kawasaki disease presented with a rash commonly (86%) and were more often described as ill appearing (43%) compared with other groups of febrile children. In both the Kawasaki disease (25%) and other inflammatory condition

groups (18%) antibiotics were prescribed less. New diagnoses of malignancies were rare (n=4 (0.1%)).

DISCUSSION

Principal findings

A considerable percentage of febrile children presenting to EDs will have a prolonged fever ≥ 5 days (10.6%). Warning signs of fever were observed equally between those with a prolonged and a shorter duration of fever, and they had similar acuity of presentations as reflected by triage urgency, need for ILSI or paediatric intensive care unit admissions. However, incidence of SBI in children with fever ≥ 5 days was higher than for those with duration < 5 days (8.4% vs 5.7%). Most children with fever ≥ 5 days and SBI had either a urinary tract or a lower respiratory tract focus, with invasive bacterial infections being rare (0.4%). Other serious causes for prolonged fever, including Kawasaki disease, inflammatory conditions and malignancies, were infrequent (1.7%).

Comparison with literature

Studies previously showed an association between SBI, and in particular pneumonia, and the duration of fever.^{15 16} However, two systematic reviews found inconclusive and contradicting evidence.^{17 18} Most studies used continuous duration of fever, whereas we looked at children with duration of fever at a cut-off of 5 days. Our data suggest a reassuring narrative that a prolonged fever by itself is not a convincing warning sign for bacterial infections leading to critical illness, as illustrated by similar rates of warning signs and measures of acuity between children with a prolonged and shorter duration of fever. However, the large proportion of children with prolonged fever and SBI having a lower respiratory tract focus is in line with reports of secondary bacterial infection following initial viral illness and translocation of nasopharyngeal microbiome.¹⁹ Importantly, our targeted population differs from the population of children with fever of unknown origin, which typically requires fevers for at least 2 weeks, and which reportedly has higher rates of non-infectious causes.^{20 21}

Implications for clinical practice

The observed higher rate of SBI in children with fever ≥ 5 days signals a need for a careful yet balanced diagnostic workup. A blanket approach for extensive diagnostic testing appears unwarranted, supported by low rates of other causes of serious illness and current practice showing many of these children undergoing no additional testing. However, the history taking and clinical examination should reflect the broad differential diagnostic possibilities, both infectious and

Table 4 Details of diagnostics performed in children with fever of 5 days or more

Type of test	n (%)	Range per hospital
C-reactive protein	2152 (57)	17%–98%
White cell count	2133 (56)	17%–98%
Urinalysis	1010 (27)	10%–37%
Chest X-ray	979 (26)	9%–46%
Any type of respiratory test (virology and/or microbiology)	781 (21)	5%–35%
Blood culture	494 (13)	1%–38%
Ultrasound	299 (8)	0%–21%
Urine culture	328 (9)	1%–32%
Faeces culture	103 (3)	0%–4%
CT	32 (1)	0%–5%
Cerebral spinal fluid	25 (1)	0%–2%
No diagnostic test performed	969 (26)	5%–56%

non-infectious, and which include rare, but serious, underlying pathologies, sometimes requiring time critical recognition and treatment,²² and in our study the rates of these were not negligible. The presence of warning signs, though some were infrequently encountered, should lead to senior clinical review and a low threshold for additional testing. The absence of these warning signs does not reliably rule out SBI. The presence of non-specific clinical signs and symptoms should be evaluated in the context of other possible warning signs. Our results show an important diagnostic role for CRP, arguing for its inclusion in the diagnostic management, in particular in unwell-appearing children, in those with additional warning signs and in those without a clear focus of bacterial infection. Similarly, with many having a urinary tract focus, our results reiterate the need for targeted urinalysis testing. Previous work showed a limited role for routine viral respiratory tests for ruling out of SBI in febrile children, while recognising the difficulties of defining true bacterial lower respiratory tract infections.²³ As no single clinical sign, symptom or currently available biomarker can reliably identify those with a prolonged fever caused by SBI or inflammatory conditions, future research should focus on next generation biomarkers.¹⁴ How the COVID-19 pandemic changed the current and future epidemiology of infectious and inflammatory diseases in childhood is unclear, particularly given the emergence of the multisystem inflammatory syndrome in children,²⁴ and additional studies are needed. Even before the COVID-19 pandemic inflammatory conditions, such as Kawasaki disease, appeared to be increasing.²

Strengths and limitations

The main strength is the use of data from consecutive children with a prolonged fever attending a diverse range of paediatric EDs across Europe, underlining the validity and generalisability of our findings. Despite many children presenting to healthcare earlier in the disease episode, we do not have those data and thus unable to assess disease evolution. Unsurprisingly, CRP was an important predicting variable for SBI, and although allocation of SBI for some children (ie, those with a 'definite bacterial infection', online supplemental file 2) was independent of CRP level, assigning SBI was dependent on CRP level for others (those with 'probable bacterial infection'). Another limitation was the amount of missing clinical data introducing selection bias (online supplemental file 6). Additionally, many children did not undergo additional investigations despite a fever ≥ 5 days causing verification bias. Finally, the work will have to consider the variable prevalences of infectious pathogens given the impact of seasonality.

CONCLUSION

In children with prolonged fever, there is a higher risk of SBI, warranting a careful clinical assessment and considerate diagnostic workup. In this cohort, warning signs of SBI occurred infrequently; however, if present, they increase the likelihood of SBI. Although rare, clinicians should consider the possibility of important non-infectious causes of prolonged fever.

Author affiliations

¹Department of Paediatric Emergency Medicine, Division of Medicine, St. Mary's hospital - Imperial College NHS Healthcare Trust, London, UK

²Faculty of Medicine, Department of Infectious Diseases, Section of Paediatric Infectious Diseases, Imperial College London, London, UK

³Centre for Paediatrics and Child Health, Imperial College London, London, UK

⁴Department of General Paediatrics, Erasmus MC-Sophia Children's Hospital, Rotterdam, Netherlands

⁵Department of Public Health, Erasmus University Medical Centre, Rotterdam, Netherlands

⁶Department of Pediatrics, Children's Clinical University Hospital, Rigas Stradiņa Universitāte, Riga, Latvia

⁷Division of Paediatric Infectious Diseases, Dr. von Hauner Children's Hospital, University Hospital, Ludwig-Maximilian-University, Munich, Germany

⁸Partner site Munich, German Centre for Infection Research, Munich, Germany

⁹Institute of Infection and Global Health, University of Liverpool, Liverpool, UK

¹⁰Alder Hey Children's NHS Foundation Trust, Liverpool, UK

¹¹Second Department of Paediatrics, P & A Kyriakou Children's Hospital, National and Kapodistrian University of Athens, Athens, Greece

¹²Paediatric Immunology, Infectious Diseases & Allergy, Great North Children's Hospital, Newcastle upon Tyne Hospitals NHS Foundation Trust, Newcastle upon Tyne, UK

¹³Translational and Clinical Research Institute, Newcastle University, Newcastle upon Tyne, UK

¹⁴NIHR Newcastle Biomedical Research Centre, Newcastle upon Tyne Hospitals NHS Trust and Newcastle University, Newcastle upon Tyne, UK

¹⁵Paediatric Infectious Diseases and Immunology, Wilhelmina Children's Hospital, University Medical Centre Utrecht, Utrecht, Netherlands

¹⁶Paediatric Infectious Diseases and Immunology, Amalia Children's Hospital, Radboud University Medical Centre, Nijmegen, Netherlands

¹⁷Section Paediatric Infectious Diseases, Laboratory of Medical Immunology, Radboud Institute for Molecular Life Sciences, Nijmegen, Netherlands

¹⁸Department of General Paediatrics, Medical University of Graz, Graz, Austria

¹⁹Population Health Sciences Institute, Newcastle University, Newcastle upon Tyne, UK

²⁰Genetics, Vaccines, Infections and Paediatrics Research group (GENVIP), Hospital Clinico Universitario de Santiago, Santiago de Compostela, Spain

²¹Department of Infectious Diseases, University Medical Centre Ljubljana, Ljubljana, Slovenia

²²Clinical Research Department, Faculty of Tropical and Infectious Disease, London School of Hygiene and Tropical Medicine, London, UK

²³Department of Paediatric Infectious Diseases and Immunology, Erasmus MC-Sophia Children's Hospital, Rotterdam, Netherlands

Twitter Ruud G Nijman @rgnijman, Enitan D Carrol @CarrolEnitan and Benno Kohlmaier @BennoKohlmaier

Collaborators Members of the Personalised Risk Assessment in Febrile Illness to Optimise Real-life Management across the European Union (PERFORM) consortium are provided in online supplemental file 1.

Contributors Conceptualisation, design, funding: RGN, CDT, NNH, JMZ, DN, JAH, AB, UvB, EC, IE, ME, MvdF, RdG, BK, EL, IM, FM-T, MP, FS, MT, SY, DZ, WZ, ML, CV, HAM, IKM. Data curation: RGN, CDT, NNH, JMZ, DN, JAH, AB, UvB, EC, IE, ME, MvdF, RdG, BK, EL, FM-T, MP, FS, MT, SY, DZ, WZ, ML, CV, HAM, IKM. Formal analysis: RGN, CDT. Methodology: RGN, CDT, NNH, JMZ, DN, JAH, AB, UvB, EC, IE, ME, MvdF, RdG, BK, EL, FM-T, MP, FS, MT, SY, DZ, WZ, ML, CV, HAM, IKM. Supervision: RGN, HAM, IKM, CDT. Writing—original draft: RGN, HAM, IKM, CDT. Writing—review and editing: RGN, CDT, NNH, JMZ, DN, JAH, AB, UvB, EC, IE, ME, MvdF, RdG, BK, EL, FM-T, MP, FS, MT, SY, DZ, WZ, ML, CV, HAM, IKM. Guarantor: RGN.

Funding This project received funding from the European Union's Horizon 2020 research and innovation programme (Grant Agreement No 668303). The research was supported by the National Institute for Health Research Biomedical Research Centres at Imperial College London, Newcastle Hospitals NHS Foundation Trust and Newcastle University. RGN was funded by NIHR ACL award (ACL-2018-021-007).

Competing interests None declared.

Patient consent for publication Not applicable.

Ethics approval The study was approved by the ethical committees of the participating hospitals and the need for individual patient informed consent was waived at all sites. For the UK settings, an additional opt-out mechanism was in place.

Provenance and peer review Not commissioned; externally peer reviewed.

Data availability statement Data are available in a public, open access repository. Data are available in a public, open access repository. A data set containing individual participant data will be made available in a public data repository containing a specific DOI. The data will be anonymised and will not contain any identifiable data. The data manager of the PERFORM consortium can be contacted for inquiries (tisham.de@imperial.ac.uk).

Supplemental material This content has been supplied by the author(s). It has not been vetted by BMJ Publishing Group Limited (BMJ) and may not have been peer-reviewed. Any opinions or recommendations discussed are solely those of the author(s) and are not endorsed by BMJ. BMJ disclaims all liability and responsibility arising from any reliance placed on the content. Where the content

includes any translated material, BMJ does not warrant the accuracy and reliability of the translations (including but not limited to local regulations, clinical guidelines, terminology, drug names and drug dosages), and is not responsible for any error and/or omissions arising from translation and adaptation or otherwise.

ORCID iDs

Ruud G Nijman <http://orcid.org/0000-0001-9671-8161>
 Chantal D Tan <http://orcid.org/0000-0002-1148-9716>
 Nienke N Hagedoorn <http://orcid.org/0000-0001-9237-4904>
 Jethro Adam Herberg <http://orcid.org/0000-0001-6941-6491>
 Ulrich von Both <http://orcid.org/0000-0001-8411-1071>
 Benno Kohlmaier <http://orcid.org/0000-0003-0685-689X>
 Federico Martínón-Torres <http://orcid.org/0000-0002-9023-581X>
 Joany M Zachariasse <http://orcid.org/0000-0002-4093-8509>
 Henriette A Moll <http://orcid.org/0000-0001-9304-3322>

REFERENCES

- National Institute of Health and Care Excellence (NICE). Fever in under 5s: assessment and initial management-NICE guideline [NG143]; 2019.
- Tulloh RMR, Mayon-White R, Harnden A, et al. Kawasaki disease: a prospective population survey in the UK and Ireland from 2013 to 2015. *Arch Dis Child* 2019;104:640–6.
- Nijman RG, De Guchtenaere A, Koletzko B, et al. Pediatric inflammatory multisystem syndrome: statement by the pediatric section of the European society for emergency medicine and European academy of pediatrics. *Front Pediatr* 2020;8:490.
- Egert Y, Egert T, Costello W, et al. Children and young people get rheumatic disease too. *Lancet Child Adolesc Health* 2019;3:8–9.
- Ahrensberg JM, Hansen RP, Olesen F, et al. Presenting symptoms of children with cancer: a primary-care population-based study. *Br J Gen Pract* 2012;62:e458–65.
- National Collaborating Centre for Primary Care. Referral guidelines for suspected cancer in adults and children. London, UK National Institute of Health and Clinical Excellence: Guidance; Clinical Governance Research and Development Unit - Department of Health Sciences - University of Leicester, Royal College of General Practitioners; 2005. 421.
- Hagedoorn NN, Borensztajn DM, Nijman R, et al. Variation in antibiotic prescription rates in febrile children presenting to emergency departments across Europe (MOFICHE): a multicentre observational study. *PLoS Med* 2020;17:e1003208.
- Borensztajn DM, Hagedoorn NN, Rivero Calle I, et al. Variation in hospital admission in febrile children evaluated at the Emergency Department (ED) in Europe: perform, a multicentre prospective observational study. *PLoS One* 2021;16:e0244810.
- Harris PA, Taylor R, Thielke R, et al. Research electronic data capture (REDCap) -- a metadata-driven methodology and workflow process for providing translational research informatics support. *J Biomed Inform* 2009;42:377–81.
- Borensztajn DM, Hagedoorn NN, Carrol ED, et al. Febrile children with comorbidities at the emergency department-a multicentre observational study. *Eur J Pediatr* 2022;181:3491–500.
- Borensztajn D, Yeung S, Hagedoorn NN, et al. Diversity in the emergency care for febrile children in Europe: a questionnaire study. *BMJ Paediatr Open* 2019;3:e000456.
- Jevon P. Paediatric advanced life support. In: *Paediatric advanced life support: a practical guide for nurses, second edition*. 2013: 134–56.
- Zachariasse JM, Nieboer D, Maconochie IK, et al. Development and validation of a paediatric early warning score for use in the emergency department: a multicentre study. *Lancet Child Adolesc Health* 2020;4:583–91.
- Nijman RG, Oostenbrink R, Moll HA, et al. A novel framework for phenotyping children with suspected or confirmed infection for future biomarker studies. *Front Pediatr* 2021;9:688272.
- Nijman RG, Vergouwe Y, Thompson M, et al. Clinical prediction model to aid emergency doctors managing febrile children at risk of serious bacterial infections: diagnostic study. *BMJ* 2013;346:f1706.
- Ramgopal S, Ambroggio L, Lorenz D, et al. A prediction model for pediatric radiographic pneumonia. *Pediatrics* 2022;149.
- Van den Bruel A, Haj-Hassan T, Thompson M, et al. Diagnostic value of clinical features at presentation to identify serious infection in children in developed countries: a systematic review. *Lancet* 2010;375:834–45.
- Elshout G, Monteny M, van der Wouden JC, et al. Duration of fever and serious bacterial infections in children: a systematic review. *BMC Fam Pract* 2011;12:33.
- de Steenhuijsen Piters WAA, Heinonen S, Hasrat R, et al. Nasopharyngeal microbiota, host transcriptome, and disease severity in children with respiratory syncytial virus infection. *Am J Respir Crit Care Med* 2016;194:1104–15.
- Chusid MJ. Fever of unknown origin in childhood. *Pediatr Clin North Am* 2017;64:205–30.
- Hu B, Chen T-M, Liu S-P, et al. Fever of unknown origin (FUO) in children: a single-centre experience from Beijing, China. *BMJ Open* 2022;12:e049840.
- McCrinkle BW, Rowley AH, Newburger JW, et al. Diagnosis, treatment, and long-term management of Kawasaki disease: a scientific statement for health professionals from the American heart association. *Circulation* 2017;135:e927–99.
- Tan CD, Hagedoorn NN, Dewez JE, et al. Rapid viral testing and antibiotic prescription in febrile children with respiratory symptoms visiting emergency departments in Europe. *Pediatr Infect Dis J* 2022;41:39–44.
- Swann OV, Holden KA, Turtle L, et al. Clinical characteristics of children and young people admitted to hospital with covid-19 in United Kingdom: prospective multicentre observational cohort study. *BMJ* 2020;370:m3249.

PERFORM consortium authors listPARTNER: IMPERIAL COLLEGE (UK)Chief investigator/PERFORM coordinator:

Michael Levin

Principal and co-investigators; work package leads (alphabetical order)

Aubrey Cunnington (grant application)

Tisham De (work package lead)

Jethro Herberg (Principle Investigator, Deputy Coordinator, grant application)

Myrsini Kaforou (grant application, work package lead)

Victoria Wright (grant application, Scientific Coordinator)

Research Group (alphabetical order)

Lucas Baumard; Evangelos Bellos; Giselle D'Souza; Rachel Galassini; Dominic Habgood-Coote; Shea Hamilton; Clive Hoggart; Sara Hourmat; Heather Jackson; Ian Maconochie; Stephanie Menikou; Naomi Lin; Samuel Nichols; Ruud Nijman; Ivonne Pena Paz; Priyen Shah; Ching-Fen Shen; Ortensia Vito; Clare Wilson

Clinical recruitment at Imperial College Healthcare NHS Trust (alphabetical order))

Amina Abdulla; Ladan Ali; Sarah Darnell; Rikke Jorgensen; Sobia Mustafa; Salina Persand

Imperial College Faculty of Engineering

Molly Stevens (co-investigator), Eunjung Kim (research group); Benjamin Pierce (research group)

Clinical recruitment at Brighton and Sussex University Hospitals

Katy Fidler (Principle Investigator)

Julia Dudley (Clinical Research Registrar)

Research nurses: Vivien Richmond, Emma Tavliavini

Clinical recruitment at National Cheng Kung University Hospital

Ching-Fen Shen (Principal Investigator); Ching-Chuan Liu (Co-investigator); Shih-Min Wang (Co-investigator), funded by the Center of Clinical Medicine Research, National Cheng Kung University

SERGAS Partner (Spain)**Principal Investigators**Federico Martinón-Torres¹Antonio Salas^{1,2}**GENVIP RESEARCH GROUP** (in alphabetical order):

Fernando Álvez González¹, Cristina Balo Farto¹, Ruth Barral-Arca^{1,2}, María Barreiro Castro¹, Xabier Bello^{1,2}, Mirian Ben García¹, Sandra Carnota¹, Miriam Cebey-López¹, María José Curras-Tuala^{1,2}, Carlos Durán Suárez¹, Luisa García Vicente¹, Alberto Gómez-Carballea^{1,2}, Jose Gómez Rial¹, Pilar Leboráns Iglesias¹, Federico Martinón-Torres¹, Nazareth Martinón-Torres¹, José María Martinón Sánchez¹, Belén Mosquera Pérez¹, Jacobo Pardo-Seco^{1,2}, Lidia Piñeiro Rodríguez¹, Sara Pischedda^{1,2}, Sara Rey Vázquez¹, Irene Rivero Calle¹, Carmen Rodríguez-Tenreiro¹, Lorenzo Redondo-Collazo¹, Miguel Sadiki Ora¹, Antonio Salas^{1,2}, Sonia Serén Fernández¹, Cristina Serén Trasorras¹, Marisol Vilas Iglesias¹.

¹ Translational Pediatrics and Infectious Diseases, Pediatrics Department, Hospital Clínico Universitario de Santiago, Santiago de Compostela, Spain, and GENVIP Research Group (www.genvip.org), Instituto de Investigación Sanitaria de Santiago, Universidad de Santiago de Compostela, Galicia, Spain.

² Unidade de Xenética, Departamento de Anatomía Patolóxica e Ciencias Forenses, Instituto de Ciencias Forenses, Facultade de Medicina, Universidade de Santiago de Compostela, and GenPop Research Group, Instituto de Investigaciones Sanitarias (IDIS), Hospital Clínico Universitario de Santiago, Galicia, Spain

³ Fundación Pública Galega de Medicina Xenómica, Servizo Galego de Saúde (SERGAS), Instituto de Investigaciones Sanitarias (IDIS), and Grupo de Medicina Xenómica, Centro de Investigación Biomédica en Red de Enfermedades Raras (CIBERER), Universidade de Santiago de Compostela (USC), Santiago de Compostela, Spain

RSU Partner (Latvia)**Principal Investigator**Dace Zavadska^{1,2}**Other RSU group authors** (in alphabetical order):

Anda Balode^{1,2}, Arta Bārzdiņa^{1,2}, Dārta Deksnē^{1,2}, Dace Gardovska^{1,2}, Dagne Grāvele², Ilze Grope^{1,2}, Anija Meiere^{1,2}, Ieva Nokalna^{1,2}, Jana Pavāre^{1,2}, Zanda Pučuka^{1,2}, Katrīna Selecka^{1,2}, Aleksandra Sidorova^{1,2}, Dace Svīle², Urzula Nora Urbāne^{1,2}.

¹ Riga Stradins university, Riga, Latvia.

² Children clinical university hospital, Riga, Latvia.

Medical Research Council Unit The Gambia (MRCG) at LSHTM Partner**Principal Investigator**

Effua Usuf

Additional Investigators

Kalifa Bojang

Syed M. A. Zaman

Fatou Secka

Suzanne Anderson

Anna RocaIsatou Sarr

Momodou Saidykhan

Saffiatou Darboe

Samba Ceesay

Umberto D'alessandro

Medical Research Council Unit The Gambia at LSHTM

P O Box 273,

Fajara, The Gambia

ERASMUS MC-Sophia Children's Hospital

Principal Investigator

Henriëtte A. Moll¹

Research group

Dorine M. Borensztajn¹, Nienke N. Hagedoorn, Chantal Tan ^{1, 1}, Clementien L. Vermont²,

Joany Zachariasse ¹

Additional investigator

W Dik ³

¹ Erasmus MC-Sophia Children's Hospital, Department of General Paediatrics, Rotterdam, the Netherlands

² Erasmus MC-Sophia Children's Hospital, Department of Paediatric Infectious Diseases & Immunology, Rotterdam, the Netherlands

³ Erasmus MC, Department of immunology, Rotterdam, the Netherlands

Swiss Pediatric Sepsis Study

Principal Investigators:

Philipp Agyeman, MD ¹ (ORCID 0000-0002-8339-5444), Luregn J Schlapbach, MD, FCICM ^{2,3} (ORCID 0000-0003-2281-2598)

Clinical recruitment at University Children's Hospital Bern for PERFORM:

Christoph Aebi ¹, Verena Wyss ¹, Mariama Usman ¹

Principal and co-investigators for the Swiss Pediatric Sepsis Study:

Philipp Agyeman, MD ¹, Luregn J Schlapbach, MD, FCICM ^{2,3}, Eric Giannoni, MD ^{4,5}, Martin Stocker, MD ⁶, Klara M Posfay-Barbe, MD ⁷, Ulrich Heininger, MD ⁸, Sara Bernhard-Stirnemann, MD ⁹, Anita Niederer-Loher, MD ¹⁰, Christian Kahlert, MD ¹⁰, Giancarlo Natalucci, MD ¹¹, Christa Relly, MD ¹², Thomas Riedel, MD ¹³, Christoph Aebi, MD ¹, Christoph Berger, MD ¹² **for the Swiss Pediatric Sepsis Study**

Affiliations:

¹ Department of Pediatrics, Inselspital, Bern University Hospital, University of Bern, Switzerland

² Neonatal and Pediatric Intensive Care Unit, Children's Research Center, University Children's Hospital Zurich, University of Zurich, Zurich, Switzerland

³ Child Health Research Centre, University of Queensland, and Queensland Children's Hospital, Brisbane, Australia

⁴ Clinic of Neonatology, Department Mother-Woman-Child, Lausanne University Hospital and University of Lausanne, Switzerland

⁵ Infectious Diseases Service, Department of Medicine, Lausanne University Hospital and University of Lausanne, Switzerland

⁶ Department of Pediatrics, Children's Hospital Lucerne, Lucerne, Switzerland

⁷ Pediatric Infectious Diseases Unit, Children's Hospital of Geneva, University Hospitals of Geneva, Geneva, Switzerland

⁸ Infectious Diseases and Vaccinology, University of Basel Children's Hospital, Basel, Switzerland

⁹ Children's Hospital Aarau, Aarau, Switzerland

¹⁰ Division of Infectious Diseases and Hospital Epidemiology, Children's Hospital of Eastern Switzerland St. Gallen, St. Gallen, Switzerland

¹¹ Department of Neonatology, University Hospital Zurich, Zurich, Switzerland

¹² Division of Infectious Diseases and Hospital Epidemiology, and Children's Research Center, University Children's Hospital Zurich, Switzerland

¹³ Children's Hospital Chur, Chur, Switzerland

Liverpool Partner

Principal InvestigatorsEnitan D Carroll^{1,2,3}Stéphane Paulus¹**Research Group (in alphabetical order):**Elizabeth Cocklin¹, Rebecca Jennings⁴, Joanne Johnston⁴, Simon Leigh¹, Karen Newall⁴, Sam Romaine¹¹ Department of Clinical Infection, Microbiology and Immunology, University of Liverpool Institute of Infection and Global Health, Liverpool, England² Alder Hey Children's Hospital, Department of Infectious Diseases, Eaton Road, Liverpool, L12 2AP³ Liverpool Health Partners, 1st Floor, Liverpool Science Park, 131 Mount Pleasant, Liverpool, L3 5TF⁴ Alder Hey Children's Hospital, Clinical Research Business Unit, Eaton Road, Liverpool, L12 2AP**NKUA Partner (Greece)****Principal investigator:** Professor **Maria Tsolia** (all activities)**Investigator/Research fellow:** **Irini Eleftheriou** (all activities)**Additional investigators:**

Recruitment: Maria Tambouratzi

Lab: Antonis Marmarinos (Quality Manager)

Lab: Marietta Xagorari

Kelly Syggelou

2nd Department of Pediatrics, National and Kapodistrian University of Athens,

"P. and A. Kyriakou" Children's Hospital

Thivon and Levadias

Goudi, Athens

Micropathology Ltd :**Principal Investigator:**

Professor Colin Fink¹, Clinical Microbiologist

Additional investigators

Dr Marie Voice¹, Post doc scientist

Dr. Leo Calvo-Bado¹, Post doc scientist

¹ Micropathology Ltd, The Venture Center, University of Warwick Science Park, Sir William Lyons Road, Coventry, CV4 7EZ.

Medical University of Graz, Austria (MUG)

Principal Investigator:

Werner Zenz¹ (all activities)

Co-investigators (in alphabetical order)

Benno Kohlmaier¹ (all activities)

Nina A. Schweintzger¹ (all activities)

Manfred G. Sagmeister¹ (study design, consortium wide sample management)

Research team

Daniela S. Kohlfürst¹ (study design)

Christoph Zurl¹ (BIVA PIC)

Alexander Binder¹ (grant application)

Recruitment team, data managers, (in alphabetical order):

Susanne Hösele¹, Manuel Leitner¹, Lena Pölz¹, Glorija Rajic¹,

Clinical recruitment partners (in alphabetical order):

Sebastian Bauchinger¹, Hinrich Baumgart⁴, Martin Benesch³, Astrid Ceolotto¹, Ernst Eber², Siegfried Gallistl¹, Gunther Gores⁵, Harald Haidl¹, Almuthe Hauer¹, Christa Hude¹, Markus Keldorfer⁵, Larissa Krenn⁴, Heidemarie Pilch⁵, Andreas Pflieger², Klaus Pfurtscheller⁴, Gudrun Nordberg⁵, Tobias Niedrist⁸, Siegfried Rödl⁴, Andrea Skrabl-Baumgartner¹, Matthias Sperl⁷, Laura Stampfer⁵, Volker Strenger³, Holger Till⁶, Andreas Trobisch⁵, Sabine Löffler⁵

Author Affiliations:

¹ Department of Pediatrics and Adolescent Medicine, Division of General Pediatrics, Medical University of Graz, Graz, Austria

²Department of Pediatric Pulmonology, Medical University of Graz, Graz, Austria

³Department of Pediatric Hematooncoloy, Medical University of Graz, Graz, Austria

⁴Paediatric Intensive Care Unit, Medical University of Graz, Graz, Austria

⁵University Clinic of Paediatrics and Adolescent Medicine Graz, Medical University Graz, Graz, Austria

⁶Department of Paediatric and Adolescence Surgery, Medical University Graz, Graz, Austria

⁷Department of Pediatric Orthopedics, Medical University Graz, Graz, Austria

⁸Clinical Institute of Medical and Chemical Laboratory Diagnostics, Medical University Graz, Graz, Austria

London School of Hygiene and Tropical Medicine

WP 1 WP2, WP5

Principal Investigator:

Dr Shunmay Yeung^{1,2,3} PhD, MBBS, FRCPCH, MRCP, DTM&H

Research Group

Dr Juan Emmanuel Dewez¹ MD, DTM&H, MSc

Prof Martin Hibberd¹ BSc, PhD

Mr David Bath² MSc, MAppFin, BA(Hons)

Dr Alec Miners² BA(Hons), MSc, PhD

Dr Ruud Nijman³ PhD MSc MD MRCPCH

Dr Catherine Wedderburn¹ BA, MBChB, DTM&H, MSc, MRCPCH

Ms Anne Meierford¹ MSc, BMedSc, BMBS

Dr Baptiste Leurent⁴, PhD, MSc

1. Faculty of Infectious and Tropical Disease, London School of Hygiene and Tropical Medicine, London, UK
2. Faculty of Public Health and Policy, London School of Hygiene and Tropical Medicine, London, UK
3. Department of Paediatrics, St. Mary's Hospital Imperial College Hospital, London, UK

4. Faculty of Epidemiology and Population Health, London School of Hygiene and Tropical Medicine, London, UK

Radboud University Medical Center (RUMC), The Netherlands

Principal Investigators:

Ronald de Groot¹, Michiel van der Flier^{1,2,3}, Marien I. de Jonge¹

Co-investigators Radboud University Medical Center (in alphabetical order):

Koen van Aerde^{1,2}, Wynand Alkema¹, Bryan van den Broek¹, Jolein Gloerich¹, Alain J. van Gool¹, Stefanie Henriët^{1,2}, Martijn Huijnen¹, Ria Philipssen¹, Esther Willems¹

Investigators PeDBIG PERFORM DUTCH CLINICAL NETWORK (in alphabetical order):

G.P.J.M. Gerrits⁸, M. van Leur⁸, J. Heidema⁴, L. de Haan^{1,2}, C.J. Miedema⁵, C. Neeleman¹, C.C. Obihara⁶, G.A. Tramper-Stranders⁷

1. Radboud University Medical Center, Nijmegen, The Netherlands
2. Amalia Children's Hospital, Nijmegen, The Netherlands
3. Wilhelmina Children's Hospital, University Medical Center Utrecht, Utrecht, The Netherlands
4. St. Antonius Hospital, Nieuwegein, The Netherlands
5. Catharina Hospital, Eindhoven, The Netherlands
6. ETZ Elisabeth, Tilburg, The Netherlands
7. Franciscus Gasthuis, Rotterdam, The Netherlands
8. Canisius Wilhelmina Hospital, Nijmegen, The Netherlands

Oxford team (UK)

Principal Investigators

Andrew J. Pollard^{1,2}, Rama Kandasamy^{1,2}, Stéphane Paulus^{1,2}

Additional Investigators

Michael J. Carter^{1,2}, Daniel O'Connor^{1,2}, Sagida Bibi^{1,2}, Dominic F. Kelly^{1,2}, Meeru Gurung³, Stephen Thorson³, Imran Ansari³, David R. Murdoch⁴, Shrijana Shrestha³, Zoe Oliver⁵

Author Affiliations:

¹Oxford Vaccine Group, Department of Paediatrics, University of Oxford, Oxford, United Kingdom.

²NIHR Oxford Biomedical Research Centre, Oxford, United Kingdom.

³Paediatric Research Unit, Patan Academy of Health Sciences, Kathmandu, Nepal.

⁴Department of Pathology, University of Otago, Christchurch, New Zealand.

⁵ Department of Paediatrics, University of Oxford.

Newcastle University, Newcastle upon Tyne, (UK)

Principal Investigator:

Marieke Emonts ^{1,2,3} (all activities)

Co-investigators

Emma Lim^{2,3,7} (all activities)

Lucille Valentine⁴

Recruitment team (alphabetical), data-managers, and GNCH Research unit:

Karen Allen⁵, Kathryn Bell⁵, Adora Chan⁵, Stephen Crulley⁵, Kirsty Devine⁵, Daniel Fabian⁵, Sharon King⁵, Paul McAlinden⁵, Sam McDonald⁵, Anne McDonnell^{2,5}, Ailsa Pickering^{2,5}, Evelyn Thomson⁵, Amanda Wood⁵, Diane Wallia⁵, Phil Woodsford⁵,

Sample processing: Frances Baxter⁵, Ashley Bell⁵, Mathew Rhodes⁵

PICU recruitment

Rachel Agbeko⁸

Christine Mackerness⁸

Students MOFICHE

Bryan Baas², Lieke Kloosterhuis², Wilma Oosthoek²

Students/medical staff PERFORM

Tasnim Arif⁶, Joshua Bennet², Calvin Collings², Ilona van der Giessen², Alex Martin², Aqeela Rashid⁶, Emily Rowlands², Gabriella de Vries², Fabian van der Velden²

Engagement work/ethics/cost effectiveness

Lucille Valentine⁴, Mike Martin⁹, Ravi Mistry², Lucille Valentine⁴

Author Affiliations:

¹ Translational and Clinical Research Institute, Newcastle University, Newcastle upon Tyne UK

²Great North Children's Hospital, Paediatric Immunology, Infectious Diseases & Allergy, Newcastle upon Tyne Hospitals NHS Foundation Trust, Newcastle upon Tyne, United Kingdom.

³NIHR Newcastle Biomedical Research Centre based at Newcastle upon Tyne Hospitals NHS Trust and Newcastle University, Westgate Rd, Newcastle upon Tyne NE4 5PL, United Kingdom

⁴Newcastle University Business School, Centre for Knowledge, Innovation, Technology and Enterprise (KITE), Newcastle upon Tyne, United Kingdom

⁵Great North Children's Hospital, Research Unit, Newcastle upon Tyne Hospitals NHS Foundation Trust, Newcastle upon Tyne, United Kingdom.

⁶Great North Children's Hospital, Paediatric Oncology, Newcastle upon Tyne Hospitals NHS Foundation Trust, Newcastle upon Tyne, United Kingdom.

⁷Population Health Sciences Institute, Newcastle University, Newcastle upon Tyne, UK

⁸Great North Children's Hospital, Paediatric Intensive Care Unit, Newcastle upon Tyne Hospitals NHS Foundation Trust, Newcastle upon Tyne, United Kingdom.

⁹Northumbria University, Newcastle upon Tyne, United Kingdom.

LMU Munich Partner (Germany)

Principal Investigator:

Ulrich von Both^{1,2} MD, FRCPCH (all activities)

Research group:

Laura Kolberg¹ MSc (all activities)

Manuela Zwerenz¹ MSc, Judith Buschbeck¹ PhD

Clinical recruitment partners (in alphabetical order):

Christoph Bidlingmaier³, Vera Binder⁴, Katharina Danhauser⁵, Nikolaus Haas¹⁰, Matthias Griese⁶, Tobias Feuchtinger⁴, Julia Keil⁹, Matthias Kappler⁶, Eberhard Lurz⁷, Georg Muench⁸, Karl Reiter⁹, Carola Schoen⁹

Author Affiliations:

¹Div. Paediatric Infectious Diseases, Hauner Children's Hospital, University Hospital, Ludwig Maximilians University (LMU), Munich, Germany

²German Center for Infection Research (DZIF), Partner Site Munich, Munich, Germany

³Div. of General Paediatrics, ⁴Div. Paediatric Haematology & Oncology, ⁵Div. of Paediatric Rheumatology, ⁶Div. of Paediatric Pulmonology, ⁷Div. of Paediatric Gastroenterology, ⁸Neonatal Intensive Care Unit, ⁹Paediatric Intensive Care Unit Hauner Children's Hospital, University Hospital, Ludwig Maximilians University (LMU), Munich, Germany, ¹⁰Department Pediatric Cardiology and Pediatric Intensive Care, University Hospital, Ludwig Maximilians University (LMU), Munich, Germany

bioMérieux, France

Principal Investigator:

François Mallet^{1,2,3}

Research Group:

Karen Brengel-Pesce^{1,2,3}

Alexandre Pachot¹

Marine Mommert^{1,2}

¹*Open Innovation & Partnerships (OIP), bioMérieux S.A., Marcy l'Etoile, France*

²*Joint research unit Hospice Civils de Lyon - bioMérieux, Centre Hospitalier Lyon Sud, 165 Chemin du Grand Revoyet, 69310 Pierre-Bénite, France*

³*EA 7426 Pathophysiology of Injury-induced Immunosuppression, University of Lyon1-Hospices Civils de Lyon-bioMérieux, Hôpital Edouard Herriot, 5 Place d'Arsonval, 69437 Lyon Cedex 3, France*

Department of Infectious Diseases, University Medical Centre Ljubljana, Slovenia

Principal Investigator:

Marko Pokorn^{1,2,3} MD, PhD

Research Group:

Mojca Kolnik¹ MD, Katarina Vincek¹ MD, Tina Plankar Srovin¹ MD, PhD, Natalija Bahovec¹ MD, Petra Prunk¹ MD, Veronika Osterman¹ MD, Tanja Avramoska¹ MD

Affiliations:

¹Department of Infectious Diseases, University Medical Centre Ljubljana, Japljeva 2, SI-1525 Ljubljana, Slovenia

²University Childrens' Hospital, University Medical Centre Ljubljana, Ljubljana, Slovenia

³Department of Infectious Diseases and Epidemiology, Faculty of Medicine, University of Ljubljana, Slovenia

Amsterdam, Academic Medical Hospital & Sanquin Research Institute (NL)

Principal Investigator:

Taco Kuijpers ^{1,2}

Co-investigators

Ilse Jongerius ²

Recruitment team (EUCLIDS, PERFORM):

J.M. van den Berg¹, D. Schonenberg¹, A.M. Barendregt¹, D. Pajkrt¹, M. van der Kuip^{1,3}, A.M. van Furth^{1,3}

Students PERFORM

Evelien Sprenkeler ², Judith Zandstra ²,

Technical support PERFORM

G. van Mierlo ², J. Geissler ²

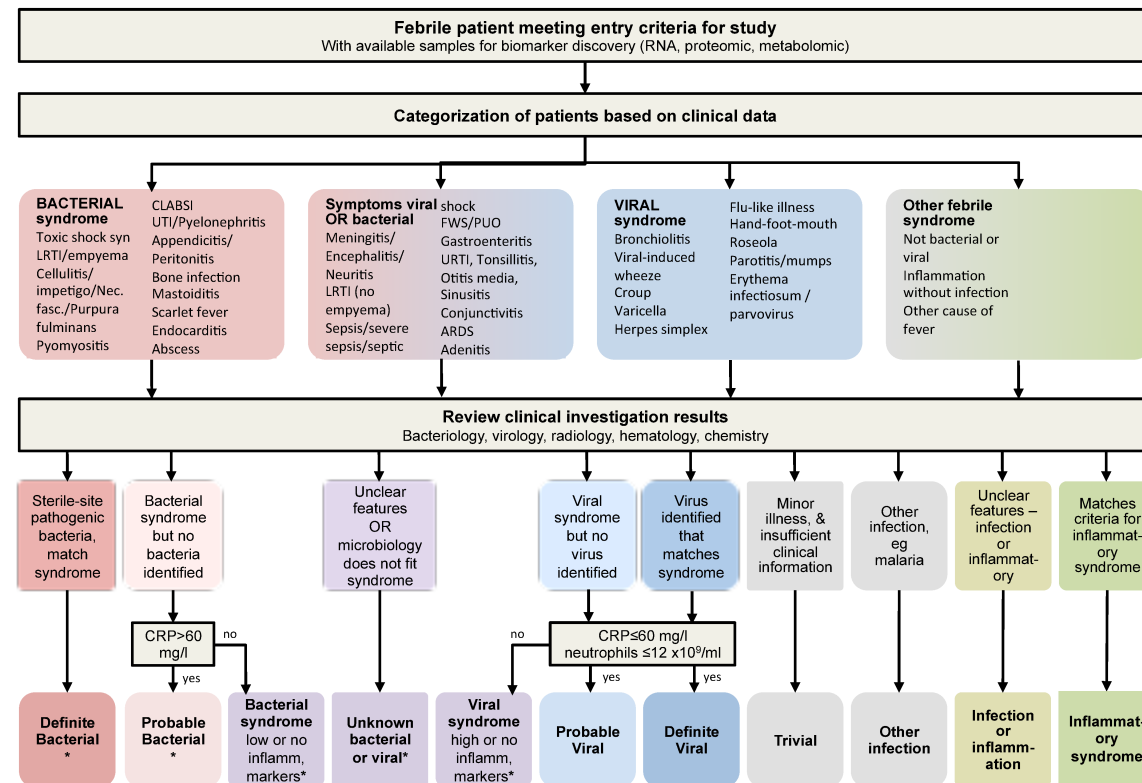
Author Affiliations:

¹ Amsterdam University Medical Center (Amsterdam UMC), location Academic Medical Center (AMC), Dept of Pediatric Immunology, Rheumatology and Infectious Diseases, University of Amsterdam, Amsterdam, the Netherlands

² Sanquin Research Institute, & Landsteiner Laboratory at the AMC, University of Amsterdam, Amsterdam, the Netherlands.

³ Amsterdam University Medical Center (Amsterdam UMC), location Vrije Universiteit Medical Center (VUMC), Dept of Pediatric Infectious Diseases and Immunology, Free University (VU), Amsterdam, the Netherlands (former affiliation)

Supplemental file 2. Algorithm for classifying children at risk of serious infection

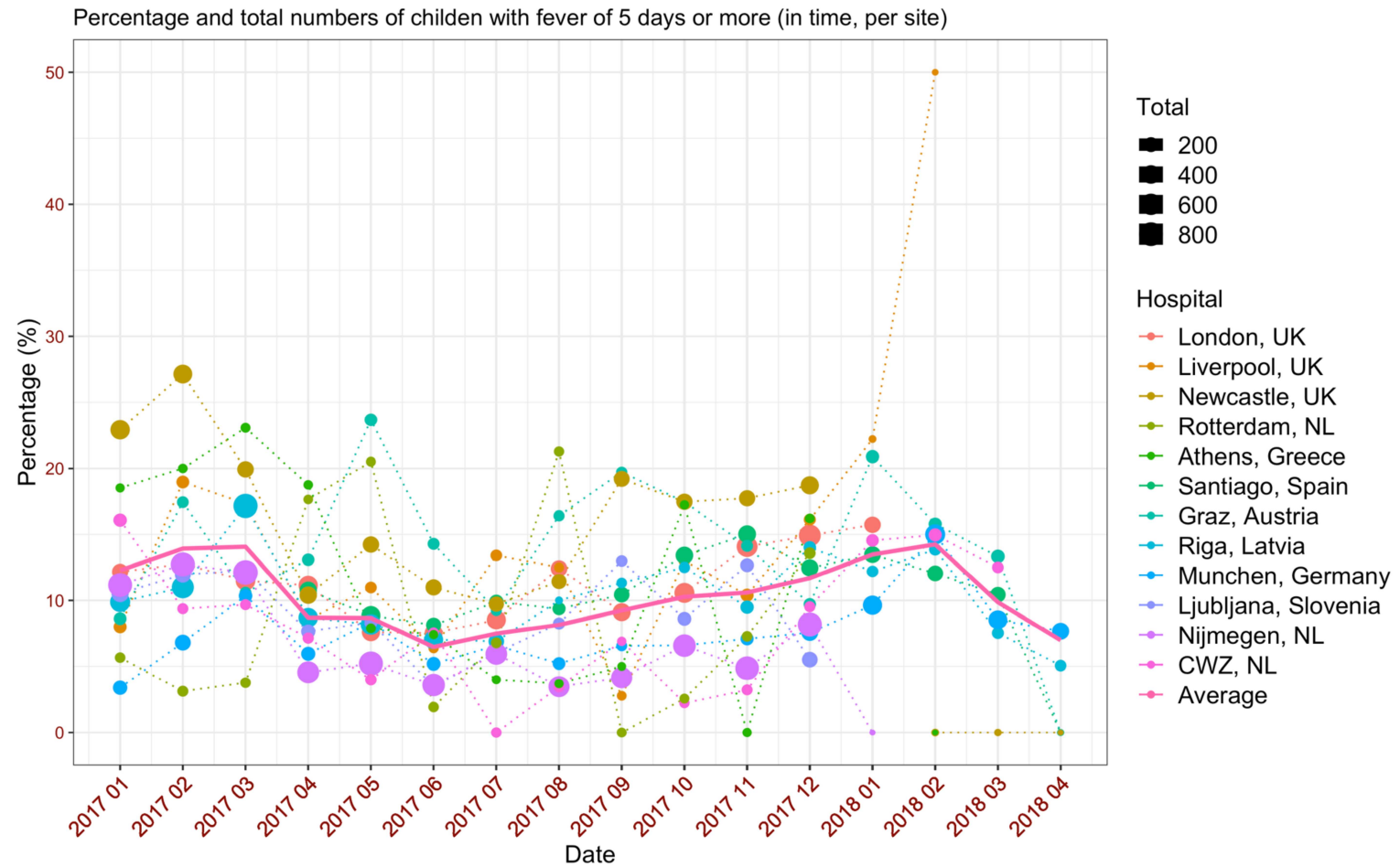


*DB/PB/unknown bacterial or viral: patients CAN have identified viral co-infection

Legend:

Following discharge, clinical phenotypes were assigned after review of all available clinical and laboratory data including biochemistry, haematology, radiology and microbiology. CRP C-reactive protein

Supplemental file 3. Number of children with fever of five days or more as a percentage of total number of febrile children included per study site and for each study period.

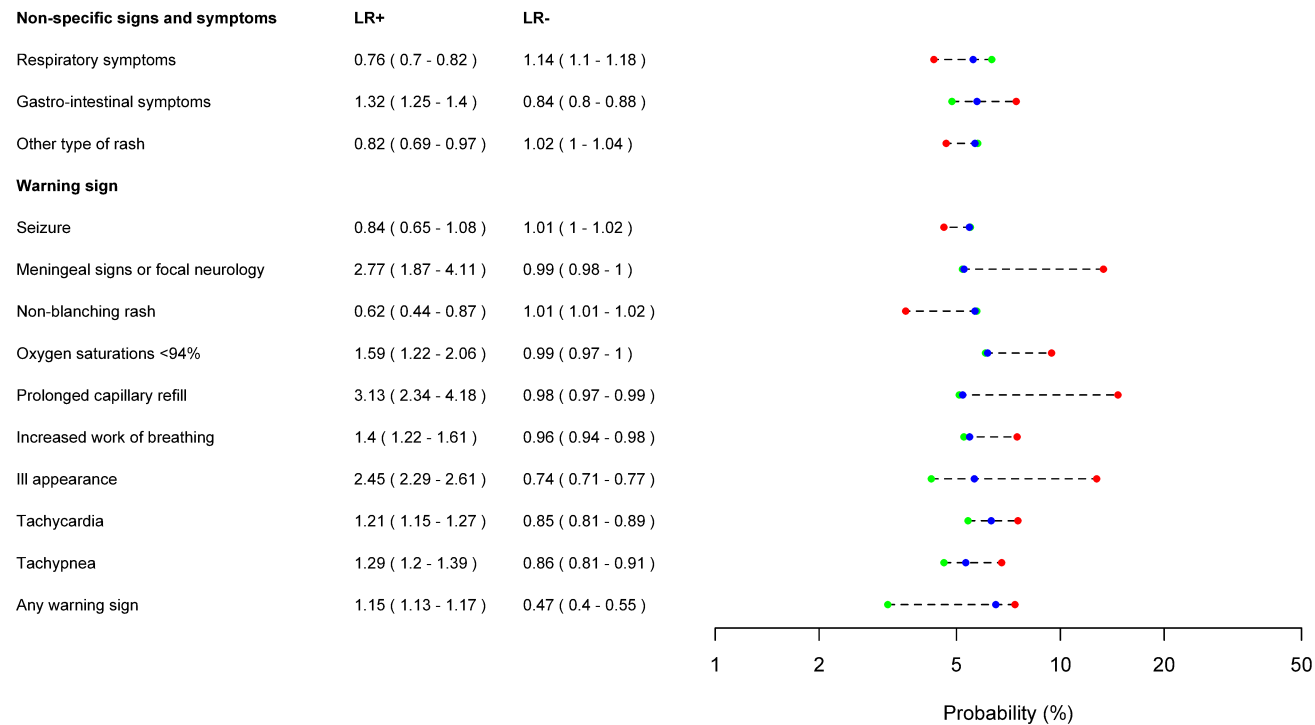


Supplemental file 4. Type of infections for children with SBI in those with fever <5 days of fever and those ≥5 days

Diagnosis – focus of infection	SBI	SBI
	fever <5 days N=1812	Fever ≥5 days N=319
Upper respiratory tract	0 (0%)	0 (0%)
Lower respiratory tract	628 (35%)	173 (54%)
Gastro-intestinal	273 (15%)	19 (6%)
Urinary tract	769 (42%)	111 (35%)
Childhood exanthema	0 (0%)	0 (0%)
Soft tissue or musculoskeletal	37 (2%)	4 (1%)
Sepsis or meningitis	105 (6%)	12 (4%)
Undifferentiated fever	0 (0%)	0 (0%)
Inflammatory or other	0 (0%)	0 (0%)

Note: children with a confirmed invasive bacterial infection could be classified with another primary focus for infection than ‘sepsis or meningitis’

Supplemental file 5. Positive and negative likelihood ratios of warning signs in children with fever <5 days

**Legend:**

The change from pre-test probabilities (blue dots) to post-test probabilities using negative likelihood ratios (green dots; rule out value) and positive likelihood ratios (red dots; rule in value) for non-specific signs and symptoms, duration of fever, and clinical warning signs. Please note, the incidence of SBI varies based on number of available data for each of the predictor variables. The x-axis is depicted on a logarithmic scale.

Supplemental file 6. Characteristics of all febrile children and their missing data

		All children N=35,705 ²	Children with fever ≥5 days, missing data n (%)	Children with fever <5 days, missing data n (%)
<i>General characteristics</i>				
Age	Median (IQR)	2.74 (1.31-5.51)	0 (0)	0 (0%)
Sex	Female, n (%)	16136 (45%)	0 (0%)	1 (0%)
Previous visit to any health care provider in last 7 days	N (%)	8991 (26%)	245 (6%)	960 (3%)
Referral	N (%)	14984 (43%)	95 (3%)	988 (3%)
Comorbidity	N (%)	5823 (16%)	27 (1%)	226 (1%)
Triage urgency classification	Emergent – Very urgent	3431 (10%)	107 (3%)	846 (3%)
	Urgent	8834 (25%)		
	Standard – Non-urgent	22487 (63%)		
Duration of fever	Days, median (IQR)	4 (3 -5)	-	-
<i>Non-specific signs and symptoms</i>				
Respiratory signs and symptoms	Any	11487 (38%)	646 (17%)	4731 (15%)
Gastro-intestinal signs and symptoms	Any	10810 (34%)	487 (13%)	3435 (11%)
Other type of rash ¹	Any	3285 (10%)	419 (11%)	3276 (10%)
<i>Warning signs and symptoms</i>				
Ill appearance	N (%)	5700 (17%)	161 (4%)	1047 (3%)

Tachypnoea (breaths/minute)	APLS thresholds, n (%)	6783 (33%)	1759 (47%)	13528 (42%)
Tachycardia (beats/minute)	APLS thresholds, n (%)	11517 (41%)	739 (20%)	7074 (22%)
Prolonged capillary refill	>= 3 seconds, n (%)	407 (1%)	555 (15%)	3466 (11%)
Oxygen saturations (%O2)	<94% O2, n (%)	762 (3%)	727 (19%)	7175 (22%)
Level of consciousness	Decreased (Verbal, Pain, Unresponsive), n (%)	180 (1%)	39 (1%)	236 (1%)
Increased work of breathing	N (%)	5249 (17%)	620 (16%)	3828 (12%)
Non-blanching rash	N (%)	1016 (3%)	419 (11%)	3276 (10%)
Neurological signs	N (%)	234 (1%)	364 (10%)	2025 (6%)
Seizures	N (%)	1303 (4%)	205 (5%)	849 (3%)
<i>Diagnostics</i>				
C-reactive protein	mg/L, Median (IQR)	18 (5 -49)	1626 (43%)	17741 (56%)
Laboratory testing at ED	Any, n (%)	16612 (47%)	0 (0%)	0 (0%)
Imaging at ED	Any, n (%)	6496 (18%)	0 (0%)	0 (0%)
<i>Treatment and outcomes</i>				
Immediate lifesaving interventions ³	Any, n (%)	563 (2%)	0 (0%)	16 (0%)
Antibiotics prescribed this attendance	Any, n (%)	11417 (32%)	62 (2%)	379 (1%)
Diagnosis – focus of infection	Upper respiratory tract	19018 (53%)	16 (0%)	243 (1%)
	Lower respiratory tract	5133 (14%)		
	Gastro-intestinal	3608 (10%)		
	Urinary tract	1256 (4%)		
	Childhood exanthema	1732 (5%)		

Disposition

Soft tissue or musculoskeletal	840 (2%)		
Sepsis or meningitis	258 (1%)		
Undifferentiated fever	2806 (8%)		
Inflammatory, other	1028 (3%)		
Discharge without follow-up	12700 (36%)	7 (0%)	41 (0%)
Discharge with follow-up	13698 (38%)		
Admission <24 hours	1735 (5%)		
Admission 24 hours or more	6761 (19%)		
Admission, duration unknown	415 (1%)		
PICU or death ⁴	143 (0.4%)		
Left without being seen	205 (1%)		

¹ This excludes any non-blanching rash including petechiae and purpurae

² the MOFICHE study included a total of 38,480 febrile children [7]; n=2,775 (7%) were excluded because of missing data on duration of fever.

³ Immediate lifesaving interventions (ILSI): airway and breathing support (non-rebreathing mask, (non-invasive)-ventilation, intubation), emergency procedures (chest needle decompression, pericardiocentesis, or open thoracotomy), haemodynamic support (fluid bolus (>10 ml/kg) or blood administration) or emergency medication (naloxone, dextrose, atropine, adenosine, epinephrine, or vasopressors)

APLS Advanced paediatric life support; CRP C-reactive protein; IQR Interquartile rang; PICU Paediatric intensive care unit; SBI Serious bacterial infection

⁴ In total, 1 death was recorded in the MOFICHE study

Supplemental file 7. Other serious illness in children with fever for five days or more and their clinical characteristics

Total	66 (1.7%)
Kawasaki Disease	21 (0.6%)
Inflammatory conditions other ^	28 (0.7%)
Malignancy	4 (0.1%)
Infection atypical^^	7 (0.2%)
Other	6 (0.2%)

^ Henoch-Schonlein purpura n=5, Juvenile idiopathic arthritis n=6, Systemic Lupus Erythematosus n=2, Auto-immune meningo-encephalitis n=2, Periodic fever syndromes n=3, Other n=9; ^^ malaria n=3, PCP n=1, oxyuriasis n=1, leishmaniasis n=1

		Kawasaki, n=21 (0.6%)	Inflammatory conditions, n=28 (0.7%)
Age	Median (IQR)	2.23 (1.53-3.81)	6.66 (4.91-11.39)
Sex	Female, n (%)	8 (38%)	14 (50%)
Previous visit to any health care provider in last 7 days	N (%)	18 (86%)	14 (54%)
Referral	N (%)	19 (90%)	19 (68%)
Comorbidity	N (%)	3 (14%)	8 (29%)
Triage urgency classification (MTS)	Emergent - Very urgent	3 (14%)	1 (4%)
	Urgent	5 (24%)	9 (32%)
	Standard - Non-urgent	13 (62%)	17 (61%)
Duration of fever	Days, median (IQR)	9 (5-14)	7 (5-13)
Respiratory signs and symptoms	Any	6 (35%)	6 (29%)
Gastro-intestinal signs and symptoms	Any	6 (38%)	8 (35%)
Other type of rash¹	Any	18 (86%)	9 (35%)
Ill appearance	N (%)	9 (43%)	4 (16%)

Tachypnoea (breaths/minute)	APLS thresholds, n(%)	1 (11%)	3 (23%)
Tachycardia (beats/minute)	APLS thresholds, n(%)	6 (30%)	4 (17%)
Prolonged capillary refill	>= 3 seconds, n(%)	0 (0%)	0 (0%)
Oxygen saturations	<94% O ₂ , n(%)	0 (0%)	0 (0%)
Level of consciousness	Decreased (Verbal, Pain, Unresponsive), n(%)	0 (0%)	1 (4%)
Increased work of breathing	N (%)	0 (0%)	0 (0%)
Non-blanching rash	N (%)	1 (5%)	7 (27%)
Neurological signs	N (%)	0 (0%)	0 (0%)
Seizures	N (%)	0 (0%)	0 (0%)
C-reactive protein	mg/L, Median (IQR)	44 (25-70)	34 (13-89)
Laboratory testing at ED	Any, n(%)	20 (95%)	24 (86%)
Imaging at ED	Any, n(%)	12 (57%)	13 (46%)
Immediate lifesaving interventions	Any, n(%)	0 (0%)	1 (4%)
Antibiotics	Any, n(%)	5 (25%)	5 (18%)
Disposition	Discharge without follow-up	0 (0%)	3 (11%)
	Discharge with follow-up	0 (0%)	0 (0%)
	Admission <24 hours	0 (0%)	14 (50%)
	Admission 24 hours or more	20 (95%)	10 (36%)
	Admission, duration unknown	1 (5%)	1 (4%)
	PICU	0 (0%)	0 (0%)

¹ This excludes any non-blanching rash including petechiae and purpurae

APLS Advanced paediatric life support; ED emergency department; IQR Interquartile range